



Instruction **KNOTTED CUSHION**



Materials from Gütermann

- Sew-all Thread in matching colours
- Cotton fabric 145 cm wide, BRILLIANT collection:
- 1.10 m branch pattern in dark green mint

In addition

- Approx. 600–700 g cotton wool filling
- Inner part of a wrapping paper roll
- Wooden rod (e.g. broomstick)
- 2 household elastics or hair bands

Tools

- Sewing machine
- Iron
- Scissors
- Cutter and ruler
- Ruler
- Tailor's chalk or fabric marker pen
- Pins

Circumference approx. 95 cm

Cutting

- Branch pattern: 20 x 140 cm, 5x

Cut all parts with a 1 cm seam allowance.

Tip

- The diameter of the finished knot is determined by the strength of the cotton wool filling. If the tube is very tightly packed, the knot becomes a little thicker and the length of the tube is also stressed overall. With a looser filling, the knot becomes smaller and softer, leaving a little more of the overall length of the tube at the end.



1. Place the narrow sides of two strips right on right and pin them. Stitch the seam, locking the start and end. Iron seam allowances apart. Connect all five strips to each other as described above. Iron seam allowances apart. Fold the 7.0 m long strip lengthwise right on right. Pin the longitudinal edge together. Quilt the seam.



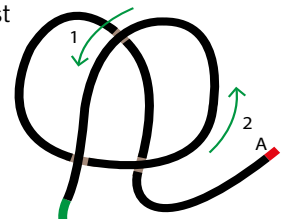
2. Close one end of the tube tightly with household elastics. To turn the tube from this side, push the wooden rod into the tube until it comes out at the open end. Pull the open end of the tube until the tube is turned completely. Iron the tube. Remove the rubber ring and fix it again over one end of the tube.



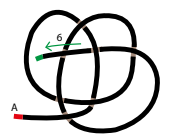
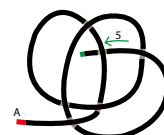
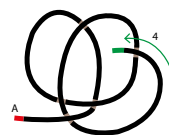
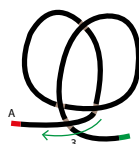
3. Push the tube tightly onto the wrapping paper roll until the roll reaches the end of the tube. Insert the cotton wool filling into the roll and push it into the tube to the end with the wooden rod. Then pull the tube approx. 10–15 cm from the roll, always as far as the inserted cotton wool is sufficient as filling. To distribute the cotton wool filling evenly, repeatedly "knead" the tube that has already been filled. Continue to push in the filling material until the tube is filled evenly along its entire length. Close the open end of the tube with the second rubber ring. Now "knead" the entire tube again. If there are any empty spaces, push the roll in again and push in more cotton wool.



4. To tie the knot, place the first loop (drawing 1) at a distance of approx. 80 cm from the red marking, the green marking on the tube always marks the long end of the tube. In the next step (drawing 2), guide the 80 cm long end (red) from drawing 1 upwards, cross the first loop to the left and to place it vertically downwards. The red marking "A" is the beginning of the winding and the green end is the remaining length of the tube.

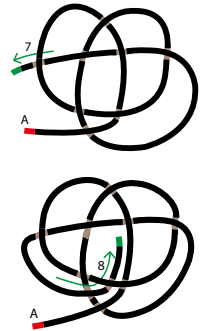


5. Lift the start "A", pull the green end to the right, then place the red start "A" to the left side (drawing 3). From now on, the start "A" remains in place. In the next step (drawing 4), place the left end over the right loop. Then push this end under the next left loop (drawing 5), then place it over the following 3rd left loop (drawing 6).

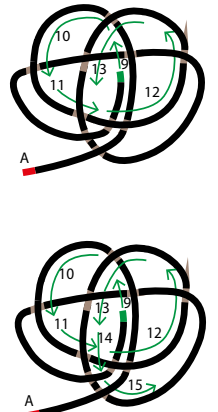




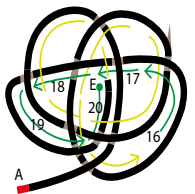
6. Continue to push the long end under the 4th left loop (drawing 7). Step 8 ends the first knotting by placing the long end over the lower loop arch. Then thread it under the horizontal loop arch. After this work step, pull or push the tube closer along the previous windings from the start.



7. Knot the second round in the direction of the arrows and according to the numbering; the windings of the first round are repeated: Step 9 over the cross loop, further under the top loop and in the arch down to the left over the cross loop (step 10). From there, go through under the vertical loop to the right (step 11). Push the long end over the two vertical loops to the top right (step 12) below the cross loop.



8. In step 13, thread the arch over the next vertical loop and further under the horizontal loop. Place the tube over the next cross loop (step 14), then under the following two loops (step 15) and to the right. Now the complete the second round, with step 16 over the two vertical loops, step 17 under the two vertical loops, continue with step 18 over the next two vertical loops, step 19 in the arch back to the right over the two vertical loops, and with step 20 ending under the horizontal loops through to the centre. The letter "E" (green dot) indicates the end. The knot now has 2 adjacent windings.



9. Pull the windings evenly to create a "round knot". Bring the two hanging ends A and E together and cut off the excess length of the tube with a 1 cm seam allowance. Turn the cut edges inwards with a width of 1 cm. Turn the end over the start and sew together with hand stitches. Distribute the windings of the entire knot evenly on all sides again, pushing the ends "AE" inwards.

Gütermann GmbH

Landstr. 1

DE- 79261 Gutach-Breisgau

Tel +49 7681 21-0

Fax +49 7681 21-449

contact@guetermann.com

www.guetermann.com

